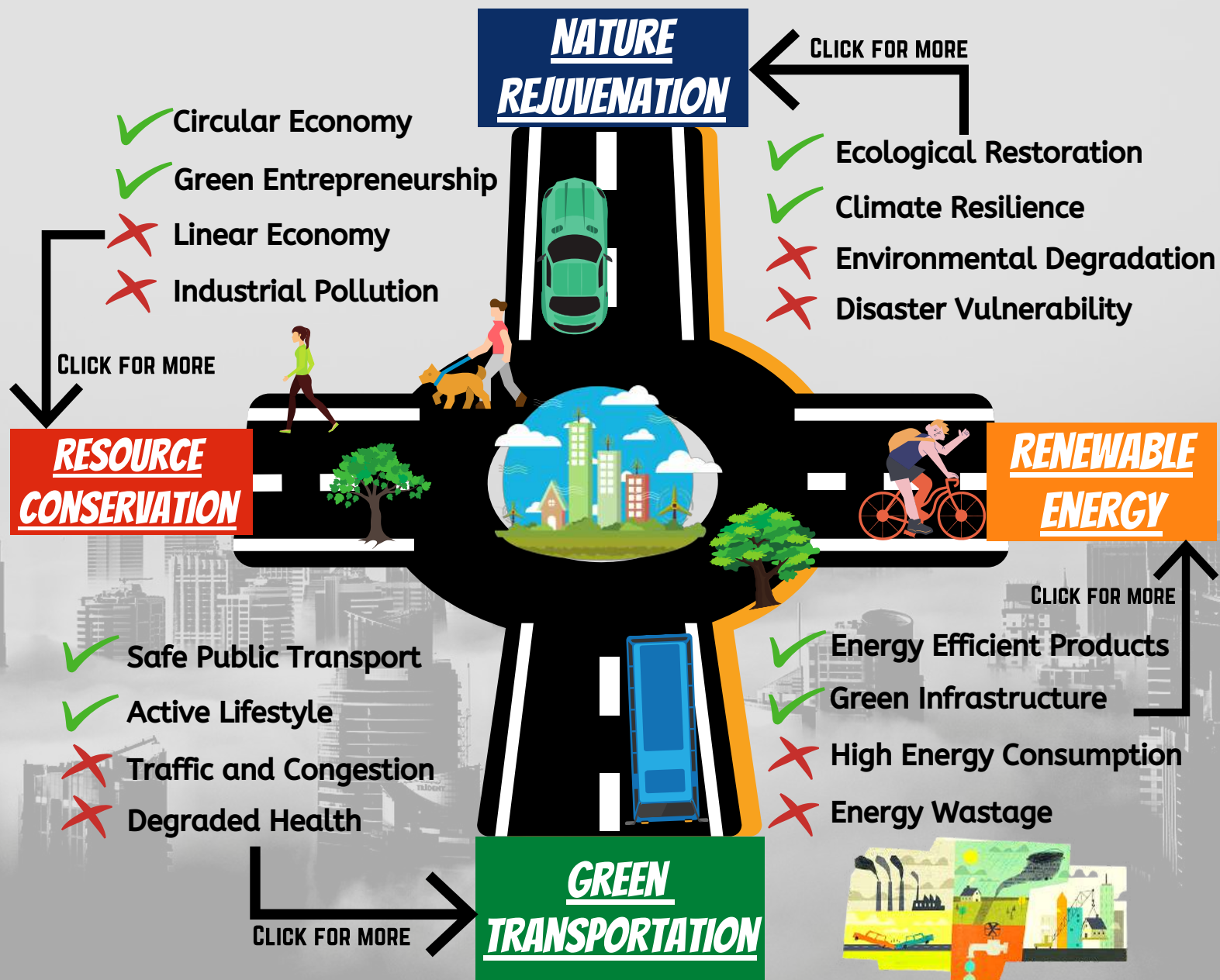


## ROLE OF CITIES IN NET-CARBON NEUTRALITY



**When can Major Cities become 'Climate Wise' is the big question!**

PER CAPITA CO2 EQ EMISSIONS OF MAJOR CITIES AROUND THE WORLD (IN TON)

CHENNAI	DELHI	LONDON	HONGKONG	DETROIT	JO'BURG	MELBOURNE	HAMBURG
4.79	2.4	10.4	34.6	25.5	9.5	13.9	11.1

The ideal per capita CO2 eq emissions threshold for humanity is about **2 ton CO2e** per annum to stay under 1.5° C temperature threshold



## **DON'T TEAR DOWN THAT OLD BUILDING: RETROFIT FOR ENERGY EFFICIENCY**

Before you begin any building project, you have to consider the carbon embedded in the materials & the operational carbon in things like heating systems, etc. Consider the source of the energy, not just the amount. Don't just look at the investment cost, look at the overall lifetime cost to determine: where is the break-even point? If we re-use and upgrade existing buildings, we are greener on every front



## **NEARLY HALF OF GDP IN CITIES AT RISK FROM NATURE LOSS: WEF SURVEY**

Cities contribute nearly 80 per cent to the global economy but they also account for nearly three-fourths of greenhouse gas emissions. Half of the city based GDP (USD 31 trillion) is at risk of disruption from Climate calamity. In the report released at the Davos Agenda 2022 summit, the World Economic Forum (WEF) said there is an urgent need to protect and add nature back into urban environments to stem this GDP loss.



## **HOW CITIES ARE GOING CARBON NEUTRAL**

Cities are among the places most likely to feel the acute impacts of climate change. The masses of concrete and glass in urban areas can make them warmer than the surrounding landscape due to the way they absorb, emit and reflect heat. In response, 25 Mega-Cities have now pledged to become Carbon Neutral by 2050. Cities need to focus on more aggressive initiatives for quick results because time is running out to mitigate the worst effects of global warming.



## **THE WEIGHT OF CITIES- HOW DO WE PREPARE FOR THE DOUBLING OF THE GLOBAL URBAN POPULATION BY 2050?**

As existing cities expand and new ones emerge, material consumption is predicted to grow even faster. By dramatically rethinking urbanism and its governance- ie. designing cities for people, not cars; allowing everyone access to urban opportunities. Investing in resource-efficient buildings, transport, energy, water and waste systems; and enabling cities to experiment and to learn from each other will be essential.

## **INDIA'S EMISSION CAPITALS**

The National Capital Region of Delhi has the highest annual carbon footprint in the country. In fact, Delhi's annual CO2 emission of 69.4 million tons is equal to the CO2 emission of Bengaluru, Hyderabad and Chennai put together. Today's cities need "radical decarbonization measures" like limiting vehicles that run on fossil fuel, shifting to mass transport, and gradually switching to 100 per cent renewable electricity that can significantly contribute towards reduction in carbon emissions.



## **CALL FOR ATTENTION!!!**

PIC is organizing a Climate Conference titled 'DECADE OF CHANGE'- *India in the climate challenged world* on 18th and 19th February 2022. More information on [climatecollectivepune.org](http://climatecollectivepune.org) soon.



PUNE INTERNATIONAL CENTRE



your Feedback is valuable to us, so proactively share your thoughts on the Email ID mentioned below:  
[climatecollectivepune@gmail.com](mailto:climatecollectivepune@gmail.com)

**Wishing all our readers Happy New Year 2022**



@PuneCliC



Climate Collective Pune



[climatecollectivepune.org](http://climatecollectivepune.org)